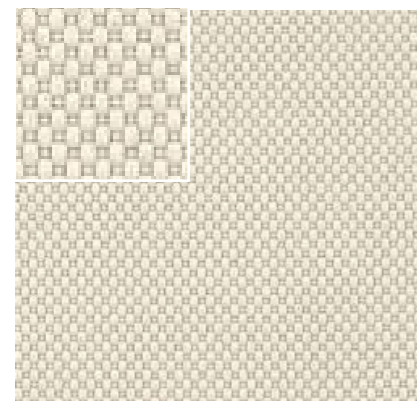


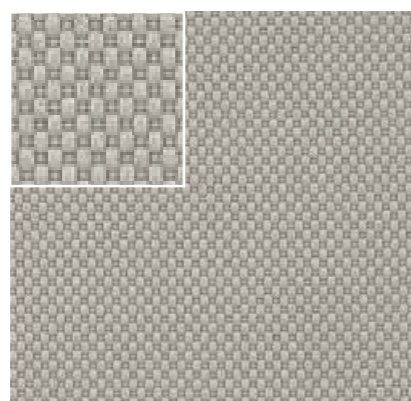
Zusammensetzung 100% Polyester  
 Breite: 140cm  
 Preisgruppe 2

Gewicht: 400 g/m<sup>2</sup>  
 Scheuerverhalten: 50.000 Martindale  
 Brandverhalten:  
 D - DIN EN 1021-1 (Zigarettentest)  
 D - DIN EN 1021-2 (Butanflammentest)  
 Lichtechtheit:  
 D - DIN EN ISO 105-B02: 2014 Note 5-7

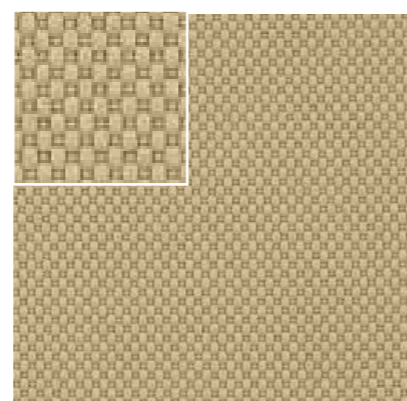
Reibechtheit:  
 D - DIN EN ISO 105-X12: 2016 Note 4-5  
 Schweißechtheit:  
 D - DIN EN ISO 105-E04: 2013 Note 4-5  
 Trockenreinigungsechtheit:  
 D - DIN EN ISO 105-D01: 2010 Note 4-5



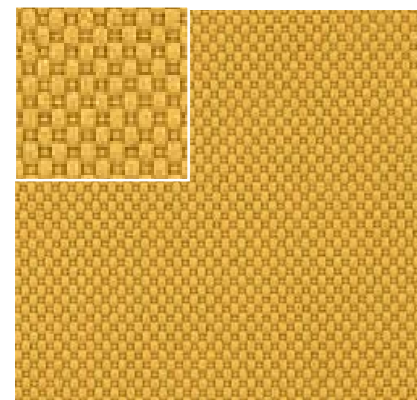
32



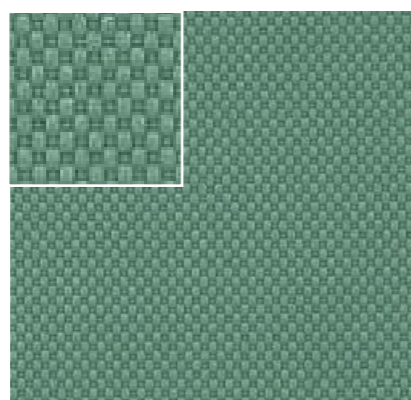
21



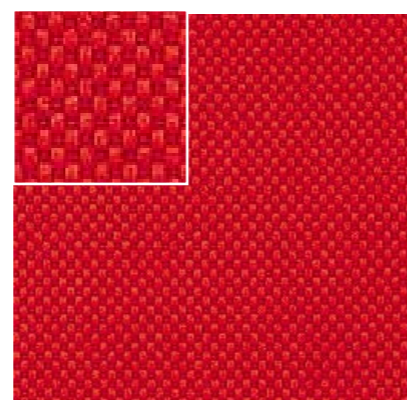
31



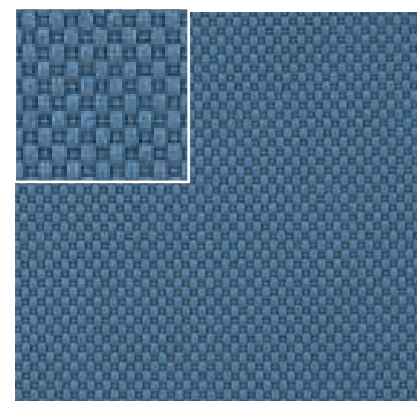
50



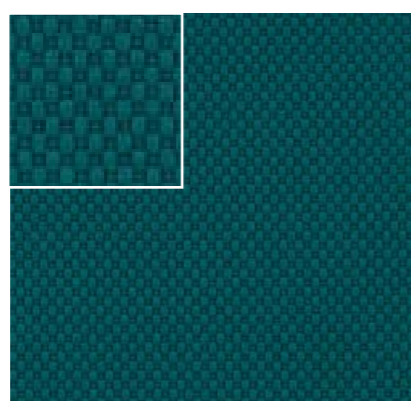
80



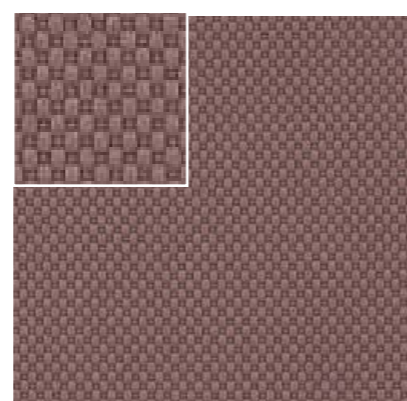
60



75



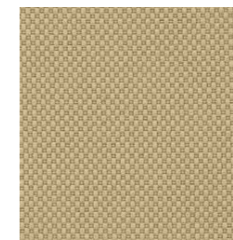
82



610



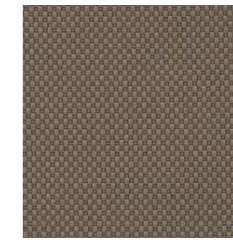
32



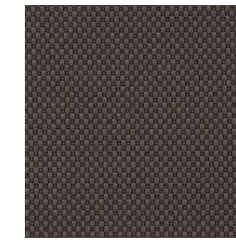
31



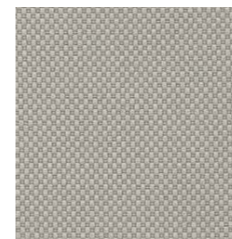
22



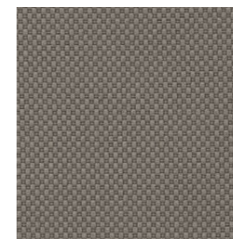
15



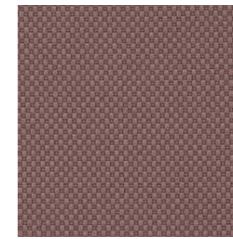
14



21



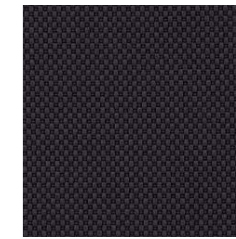
20



610



13



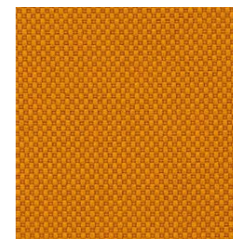
10



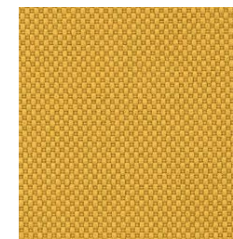
42



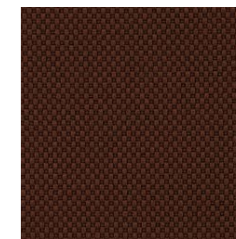
92



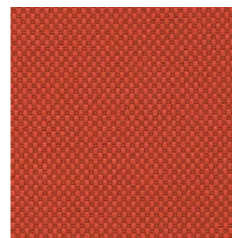
51



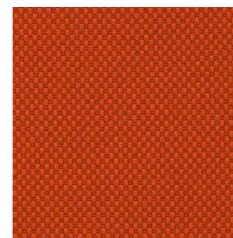
50



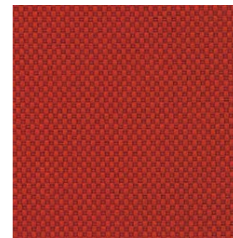
41



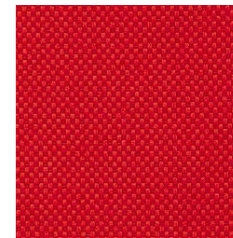
64



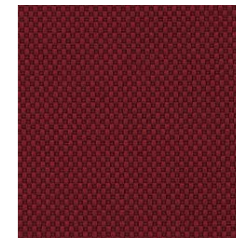
63



65



60



67



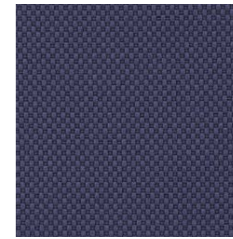
69



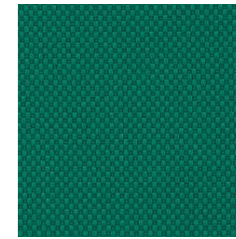
68



72



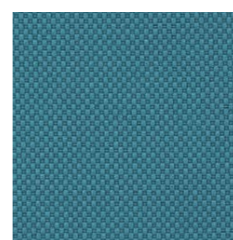
73



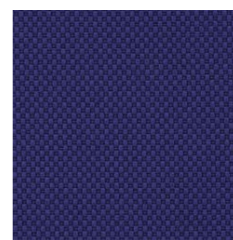
81



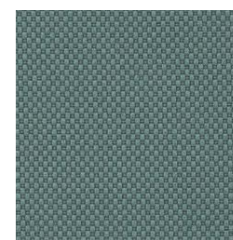
75



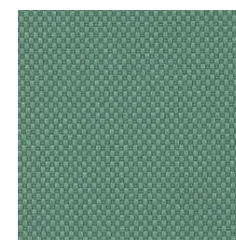
76



74



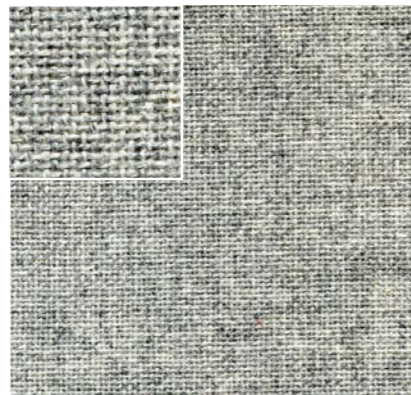
77



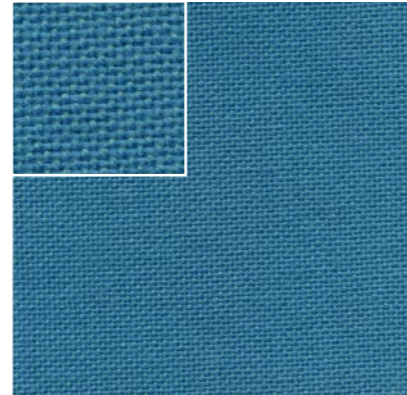
80

Zusammensetzung: 100% Polyester FR (Tr Cs)  
Breite: 140 cm Gewicht: 630g Brandschutzklasse: B1

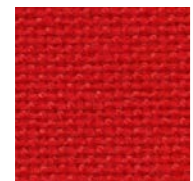
(Martindale) UNI EN ISO 12497:2000 100.000 turns ± 20%



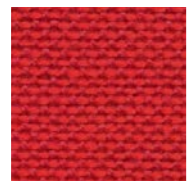
1613



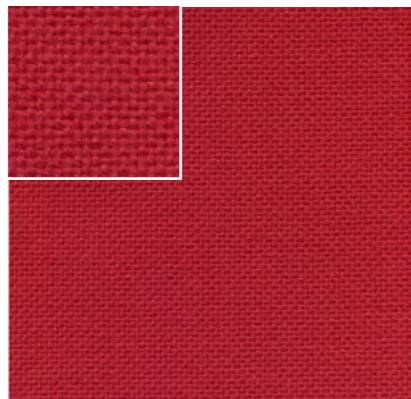
351



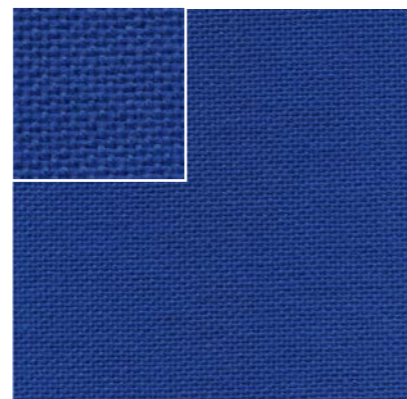
201



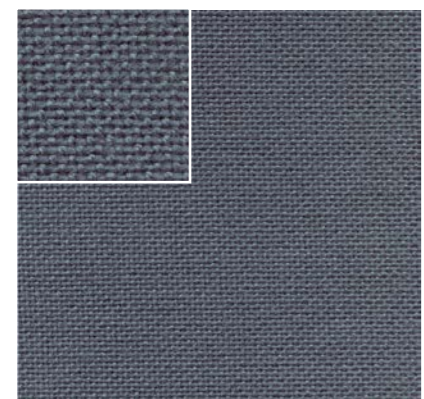
950



202



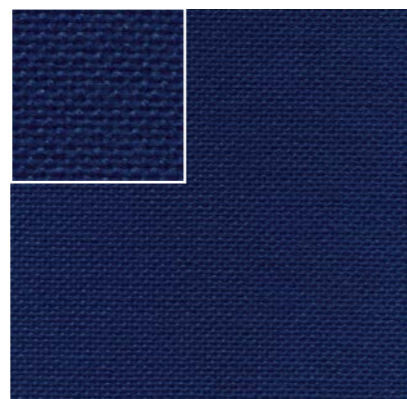
305



614



954



362



953



1610



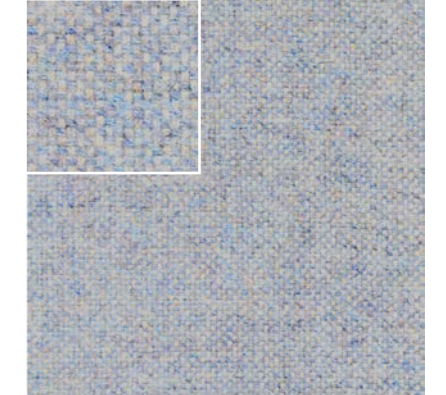
651

Zusammensetzung: 75% Wool – 25% Polyamide  
Breite: 150 cm

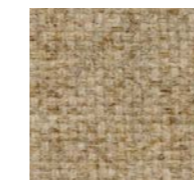
(Martindale) UNI EN ISO 12947:2000 100.000 cicli ± 20%



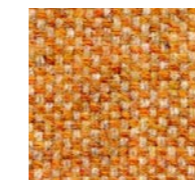
2605



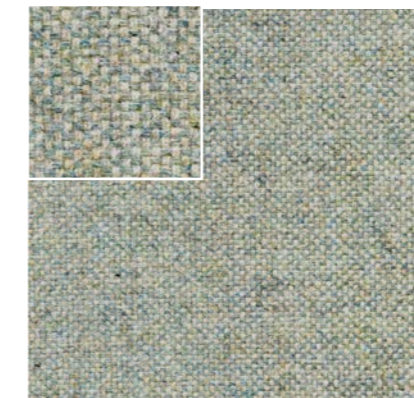
3252



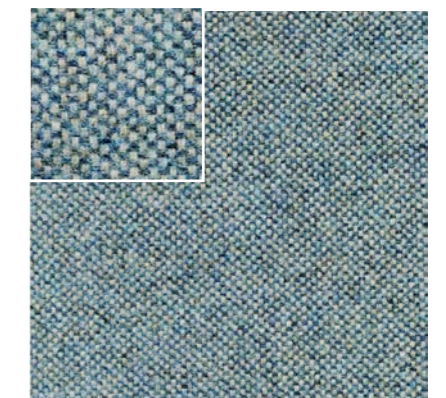
2506



2053



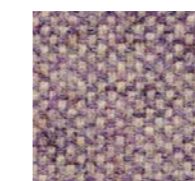
2456



2460



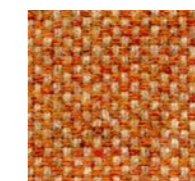
2353



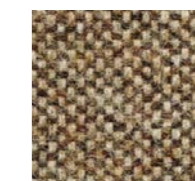
2253



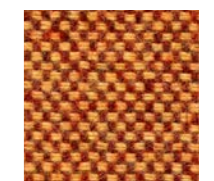
2606



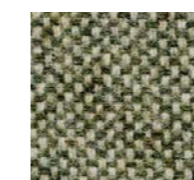
2104



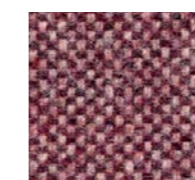
2554



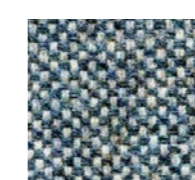
2111



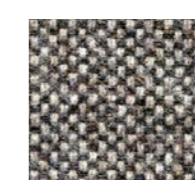
2458



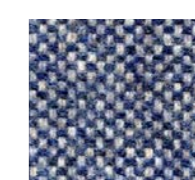
2204



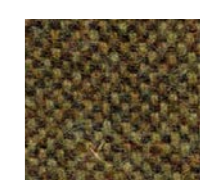
2457



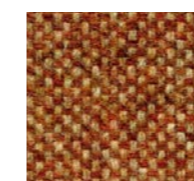
2555



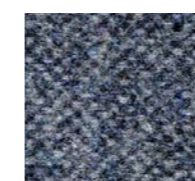
2304



2459



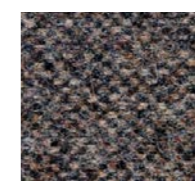
2105



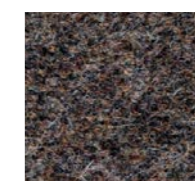
2305



2607



2556



2557



2608

Bezugsstoff zu 100% recycelt (100% Polyamid)

Besonderheit:

100% Recycelt (alte Fischernetze), OekoTex100, made in Germany, Lichtechtheit 7, 500.000 Martindale.

Ein ökologischer Bezugsstoff, der zu 100% aus Econyl hergestellt wird.

Die Garne bestehen ausschließlich aus Werkstoffen (vor allem aus alten Fischernetzen und Plastik Abfällen),

die ansonsten im Meer als Plastikmüll herumtreiben.



Gewicht: 230 g/m<sup>2</sup>

Scheuerverhalten: 500.000 Martindale

Brandverhalten:

D - DIN EN 1021-1 (Zigarettentest)

D - DIN EN 1021-2 (Butanflammentest)

Lichtechtheit:

D - DIN EN ISO 105-B02: 2014 Note 5-7

Reibeinheit:

D - DIN EN ISO 105-X12: 2016 Note 4-5

Schweißechtheit:

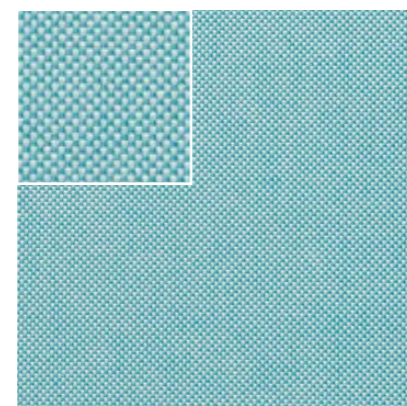
D - DIN EN ISO 105-E04: 2013 Note 4-5

Trockenreinigungsechtheit:

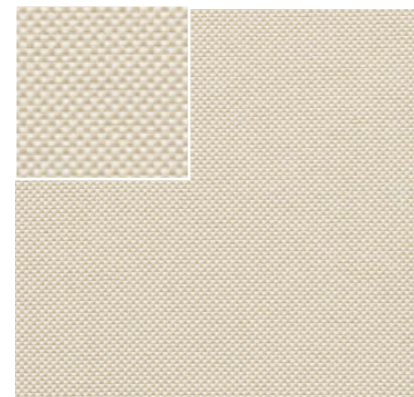
D - DIN EN ISO 105-Do1: 2010 Note 4-5

Breite: 140cm

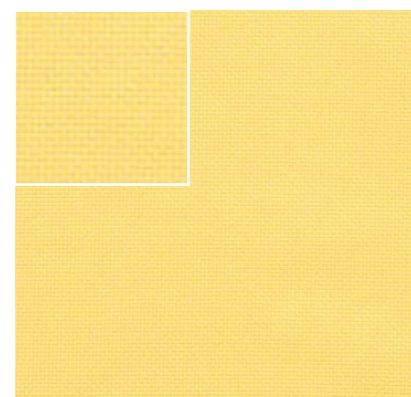
Preisgruppe 2



080



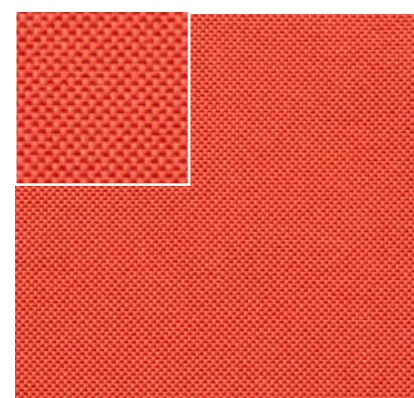
031



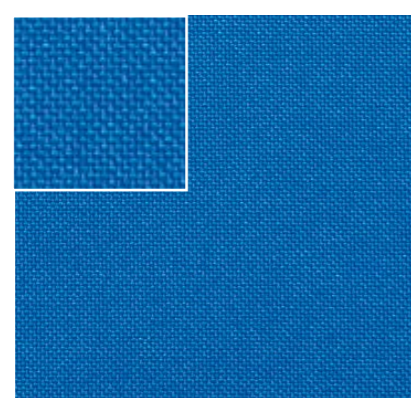
050



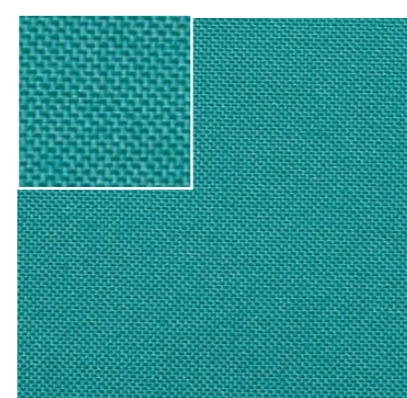
091



062



074



082



025

030

031

032

044

045

043

020

021

022

023

024

017

016

013

019

018

011

015

014

010

046

047

042

048

070

040

041

050

051

090

091

065

066

067

062

060

064

061

063

068

069

080

081

079

082

073

071

072

074

075

076

077

078

092

093

094

095

096

097

098

099

110

111

610

611

612

613

614

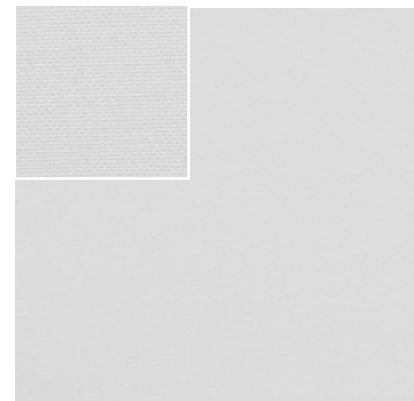
615

Zusammensetzung: Vinyl-/Urethan-Beschichtung  
 Breite: 137.00 cm  
 Gewicht: 685.00gr/m2

Preisgruppe 3

MATERIALSCHUTZ / BESCHICHTUNG

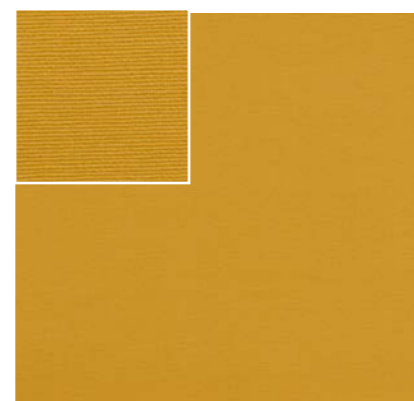
- PERMABLOK<sub>3</sub>®
- SILVERGUARD®
- Fleckenschutz-Oberfläche
- >300 000 Martindale-Zyklen (EN ISO 12947:1999 Teil 2)
- Kältebruchresistenz -23 °C
- Schimmelbeständige Trägerschicht und Oberfläche
- UV-Beständigkeit XENOTEST DIN 54004/  
NTC 1479 – BLAUWOLLSKALA
- EN 71-3 Sicherheit von Spielzeug
- Beständigkeit gegen Sulfid-Flecken



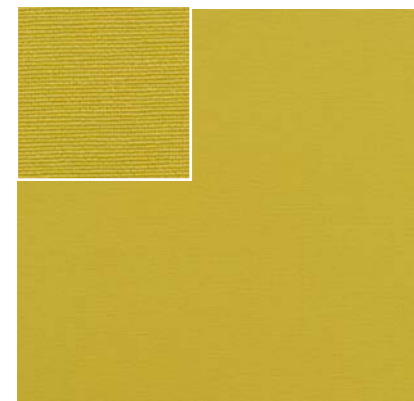
ALUMINIUM 2101



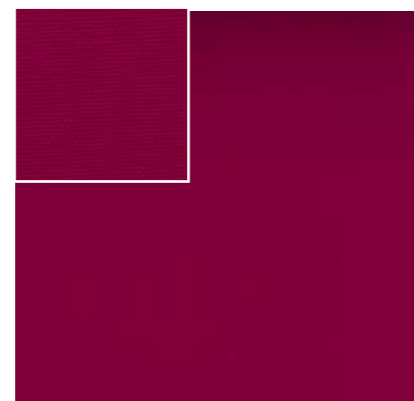
SKYLIGHT 2103



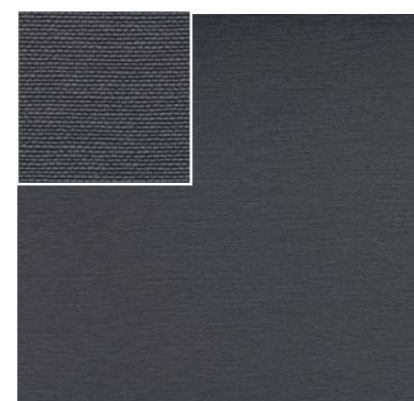
SQUASH 2093



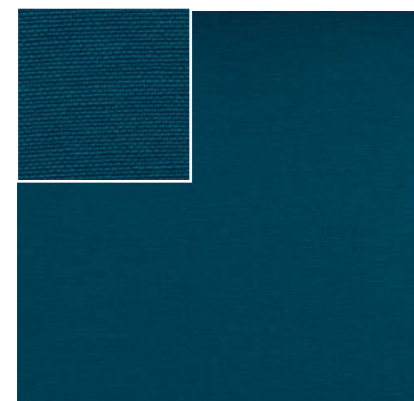
AVOCADO 2092



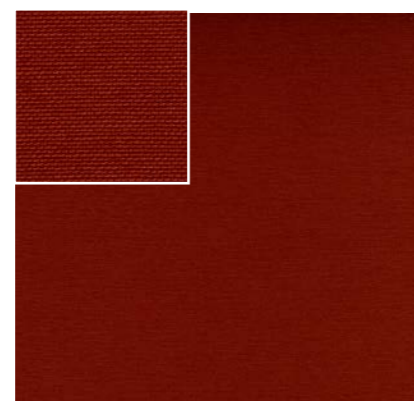
MAGENTA 7002



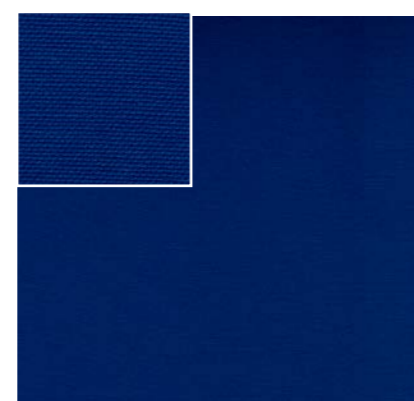
TITANIUM 4010



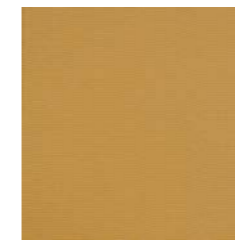
TOURQUOISE 3001



SUNKIST 2012



DELFT 3067



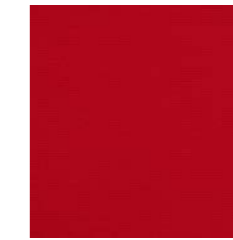
CAMEL 2105



CITRUS 2091



CORAL 2102



GRENADINE 2095



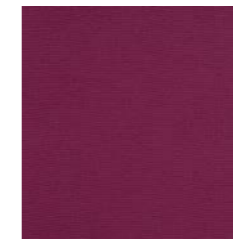
MET RED 2011



ICECREAM 2090



LOTUS 2099



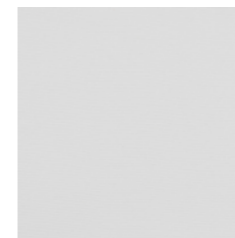
ORCHID 2097



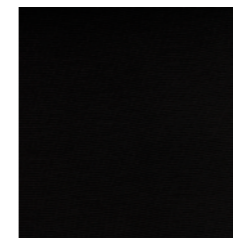
JET 3068



ULTRAVIOLET 2104



WHITE 2089



BLACK 9001



TEAL 2100



SAPPHIRE 3007



PETROL 2094



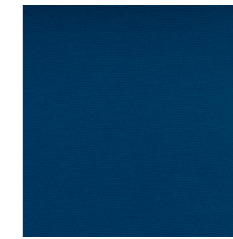
SAGE 5009



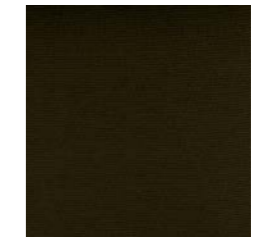
CELERY 5019



BASIL 5020



BALTIC 3066



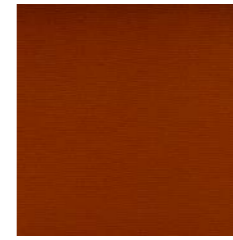
BOTTLE 5010



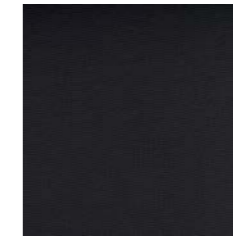
BEIGE 1010



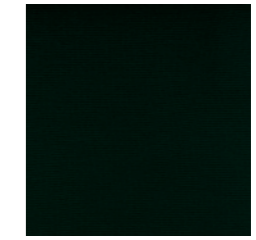
COBRE 2003



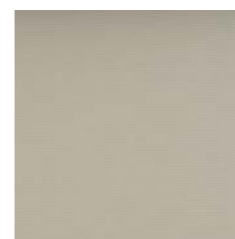
MANDARIN 6061



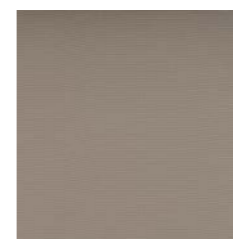
GRAPHITE 4003



FOREST 5063



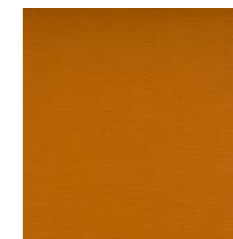
CREAM 1077



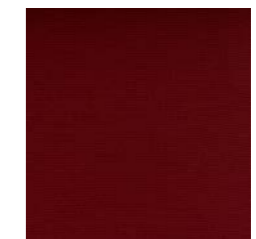
MACADAMIA 0001



TAUPE 0009



MELON 6062



WINE 2064

Zusammensetzung  
Breite: 120cm  
Preisgruppe 3

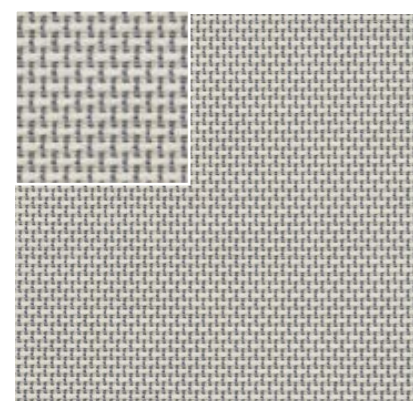
70% Polyester 30% Polyamid

Besonderheit: selbsttragender Stoff

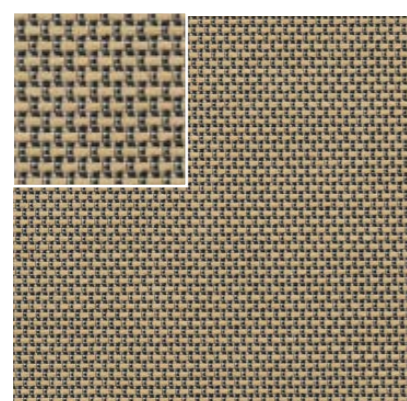
SHRINKS 4903

Gewicht: 450 g/lfdm  
Scheuerverhalten: 170.000 Martindale  
Brandverhalten:  
D - DIN EN 1021-1 (Zigarettentest)  
Lichtechtheit:  
D - DIN EN ISO 105-B02: 2014 Note 5-7

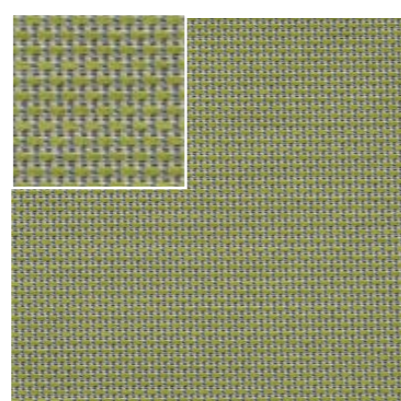
Reibechtheit:  
D - DIN EN ISO 105-X12: 2016 Note 4-5  
Schweißechtheit:  
D - DIN EN ISO 105-E04: 2013 Note 4-5  
Trockenreinigungsechtheit:  
D - DIN EN ISO 105-D01: 2010 Note 4-5



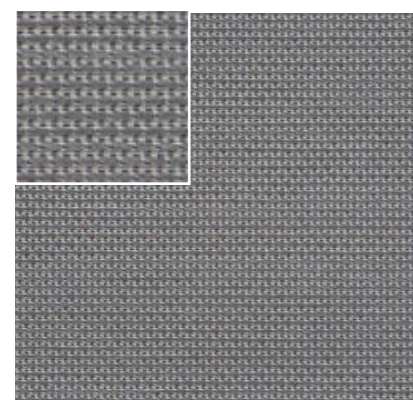
33



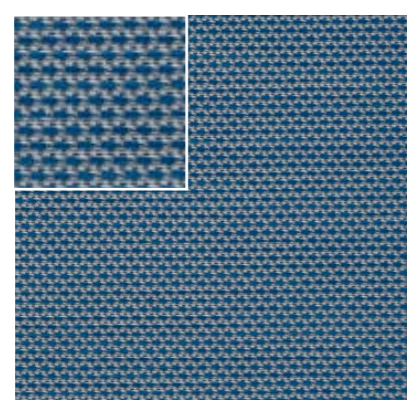
37



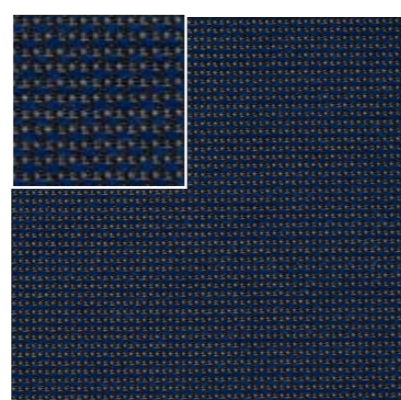
93



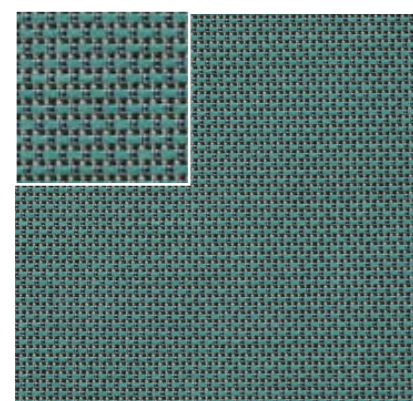
16



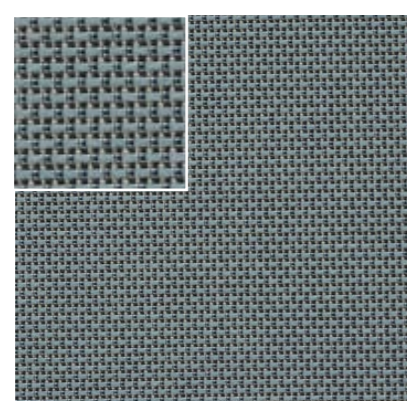
715



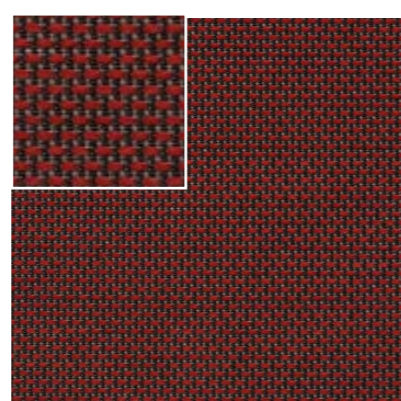
713



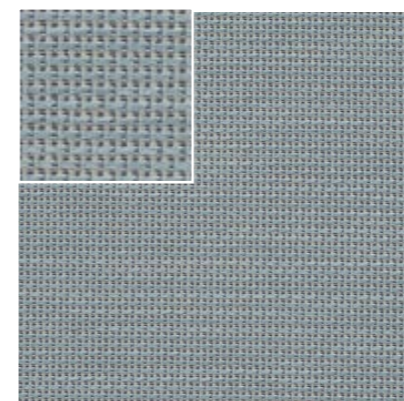
92



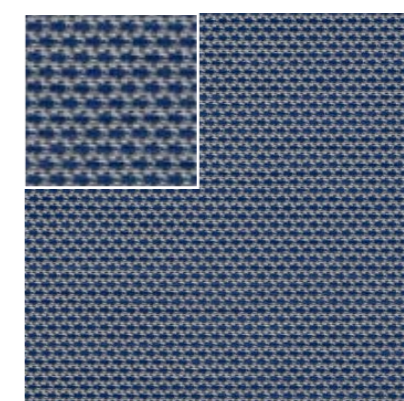
710



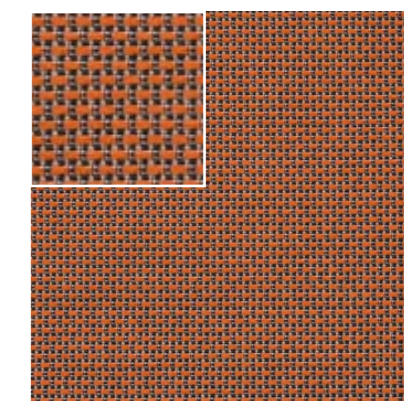
69



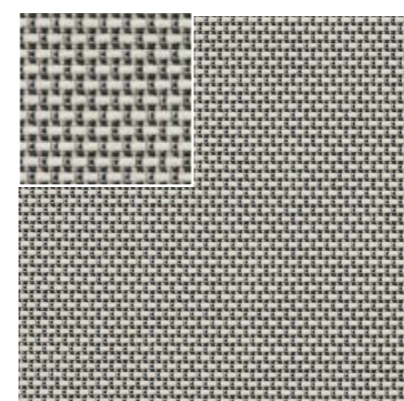
711



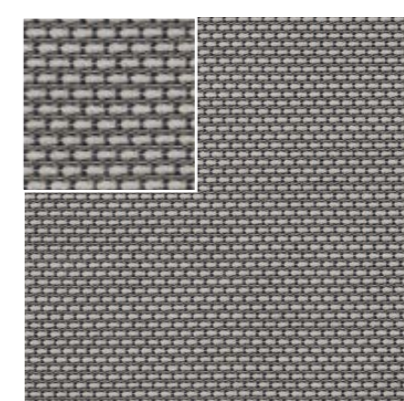
714



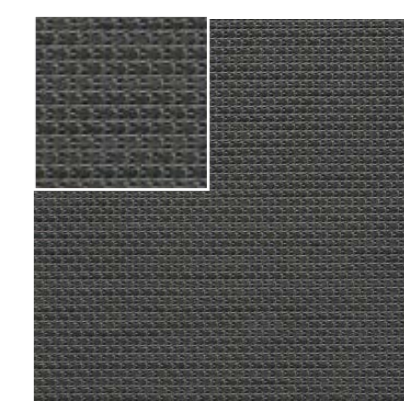
68



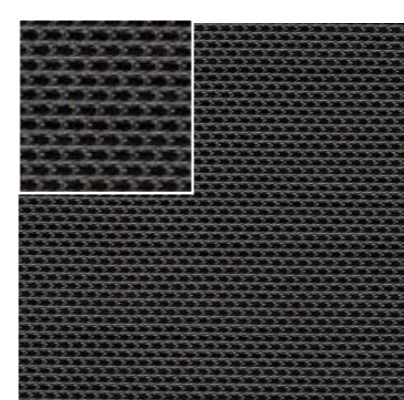
32



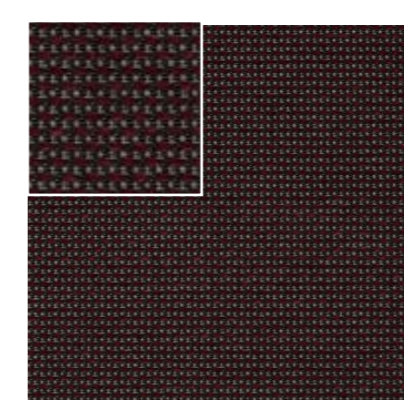
29



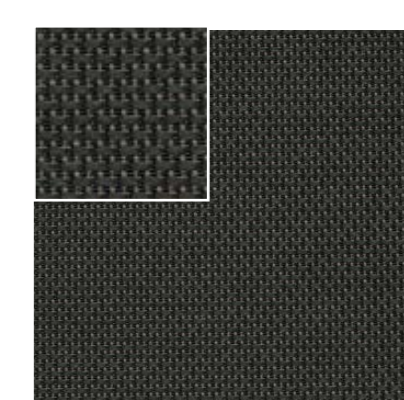
14



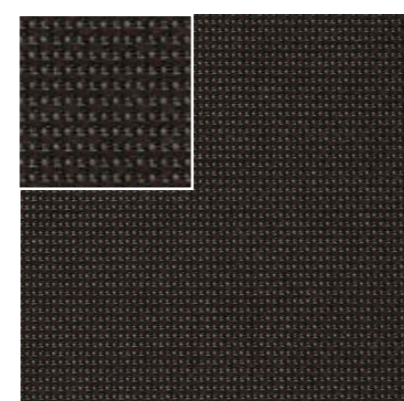
12



610



13

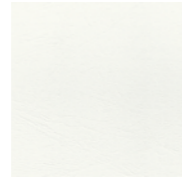


45

Ledertypisch, weich, elastisch, kratzfest, UV-beständig, langlebig, schmutzunempfindlich

Zusammensetzung  
88% PVC-Beschichtung, 12% Polyester/Viskose-Gewebe  
Gewicht: ca. 600 g/m<sup>2</sup>  
Breite: 140 cm

Scheuerfestigkeit: 100.000 Touren  
Biokompatibel nach DIN EN ISO 10993-5  
UV-Beständigkeit: 6 (ISO 105-B02)  
Dauerknickverhalten: 50.000 (DIN 53359)



WEIß 00333



PERLE 00333



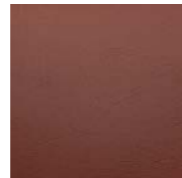
SAND 00333



MELANGE 005439



NUSS 00334



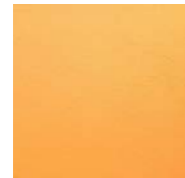
MAHAGONI 019666



LIMONADE 003335



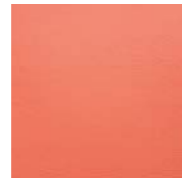
CHROM 00333



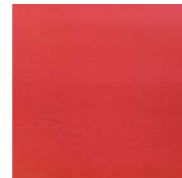
MAIS 003334



MANDARIN 008920



ROSENHOLZ 008921



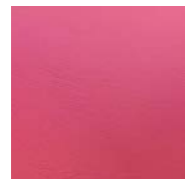
KIRSCH 003345



ORCHIDEE 003343



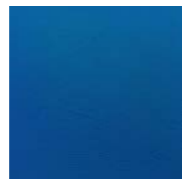
HEIDE 00334



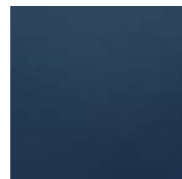
CYCLAME 003342



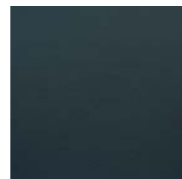
VIOLETT 003316



ATOLL 003600



ROYAL 00348



MARINE 003463



HELLBLAU 008567



BLEU 003347



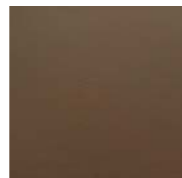
BALTIC 006466



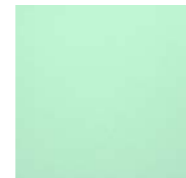
PETROL 003340



SCHIEFER 003978



TERRA 005438



MINT 003336



TÜRKIS 003337



AGAVE 003338



AMAZONAS 003339



ANTHRAZIT 004021



SCHWARZ 003349

Zusammensetzung:  
Mehrschichtverbund mit Träger aus Polyamid-Jersey

Breite: 140cm  
Gewicht: 780 g/m<sup>2</sup>  
Feuersicherung: B1

Scheuerfestigkeit: 120.000 Touren  
Dauerknickverhalten: 400.000 (EN ISO 7854)



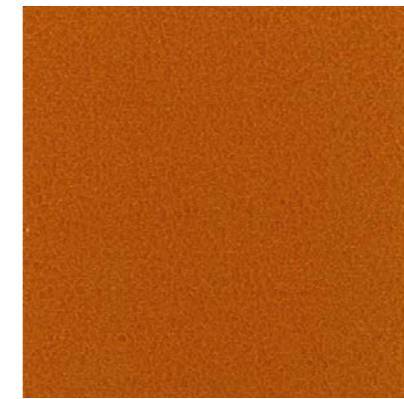
WEIß 3012



MINT 3125



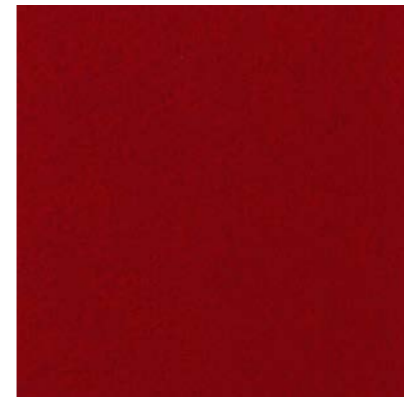
STEINGRAU 3434



TERRACOTTA 3122



TÜRKIS 3458



RUBINROT 3479



DUNKELGRAU 3445



SCHWARZ 3486

Design: Leder (Kunstleder)

Zusammensetzung: Vinyl-/Urethan-Beschichtung

Breite: 137,00 cm

Gewicht: 650.00gr/m2

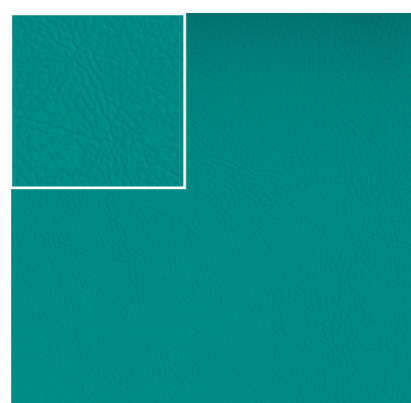


MATERIALSCHUTZ / BESCHICHTUNG

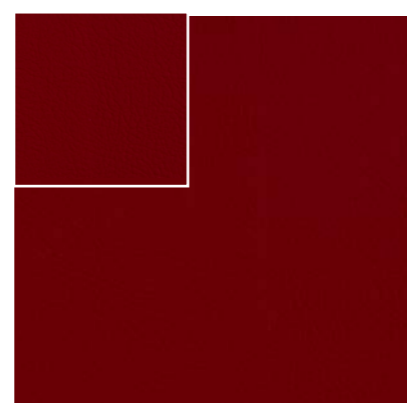
- PERMABLOK3®
- Fleckenschutz-Oberfläche
- >300 000 Martindale-Zyklen (EN ISO 12947:1999 Teil 2)
- Kältebruchresistenz -23 °C
- Schimmelbeständige Trägerschicht und Oberfläche
- UV-Beständigkeit XENOTEST DIN 54004/ NTC 1479 – BLAUWOLLSKALA
- EN 71-3 Sicherheit von Spielzeug (Migration bestimmter Elemente)
- Beständigkeit gegen Sulfid-Flecken
- Antistatische Oberfläche



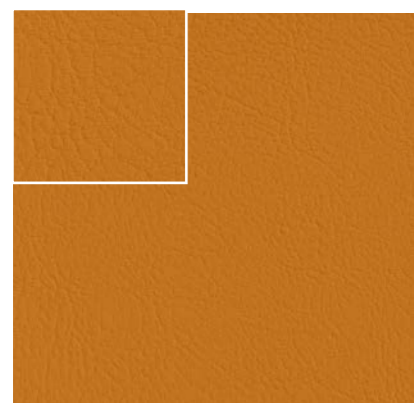
PEARL ESSENCE (METALLIC) 107-8



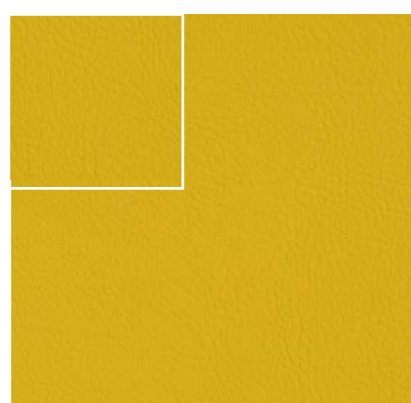
JADE 5056



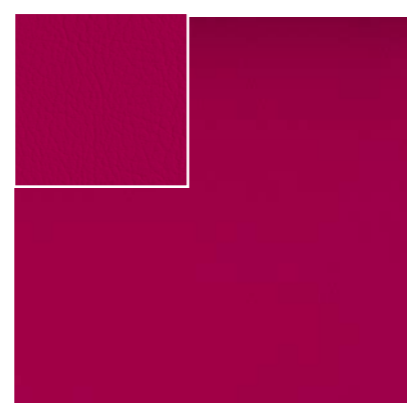
KIRSCHKE 2074



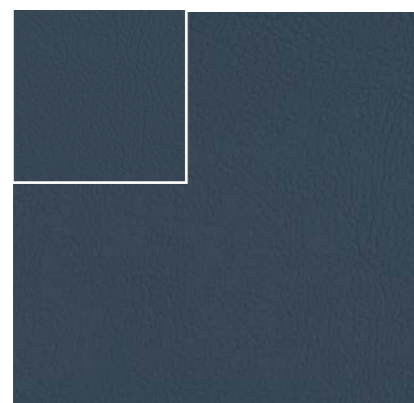
MELONE 6013



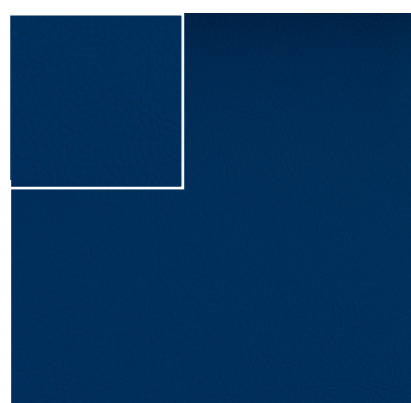
SONNE 2020



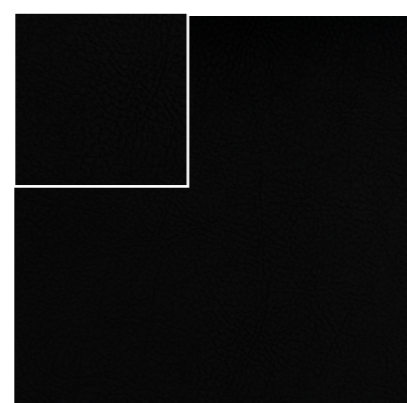
PINK 2021



TITAN 4042



BALTIC 3069



SCHWARZ 9035



PURE WHITE 9607



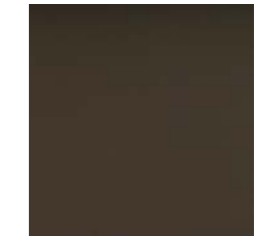
IVORY (METALLIC) 1020



LAUREL 4002



PERLE 4045



MOSS 5002



LEINEN 1049



SAFRAN 6012



ORANGE 6090



NECTARINE 6003



ROT 2075



CHAMPAGNE 1001



GOLD (METALLIC) 6020



WARM GREY 4044



AUSTER 4040



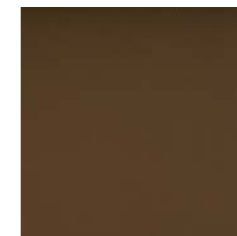
PETROL 5065



SONNE 2020



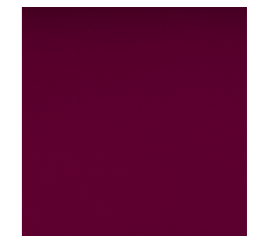
TERRACOTTA 0035



SUMATRA 9001



PORT 2062



BERRY 2020



TÜRKIS 5057



MOCCA 0020



OLIVE 5001



LAVENDEL 3001



ULTRAVIOLET 2118



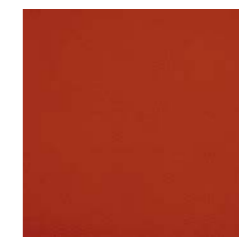
ÄPFEL 5041



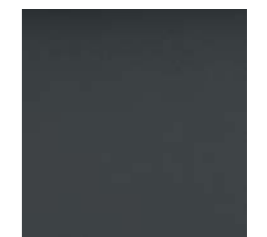
SQUASH 2111



ROSE 2114



TOMATO 2112



PLATIN 4043

Hochwertiges skai® Material mit klassischer Ledernarbung.  
 Durch seine naturgetreue Optik und Haptik ist das Material von Echtleder kaum zu unterscheiden.  
 Das Material ist insbesondere für den Objektbereich, für öffentliche Gebäude und Einrichtungen geeignet.

Dicke: 1.7 mm  
 Breite: 150,00 cm  
 Beschichtung: ca. 73% PVC-Compound  
 Träger: ca. 25% BW-Gewebe  
 Material: Vinyl

Materialeigenschaften:  
 sehr Abriebfest, Blut- und Urinbeständig, Desinfektionsmittelbeständig,  
 Easy-to-clean, Lichtecht  
 Martindale: 50.000 Martindale



Hochwertiges skai® Material mit klassischer Ledernarbung.  
 Durch seine naturgetreue Optik und Haptik ist das Material von Echtleder kaum zu unterscheiden.  
 Das Material ist insbesondere für den Objektbereich, für öffentliche Gebäude und Einrichtungen geeignet.

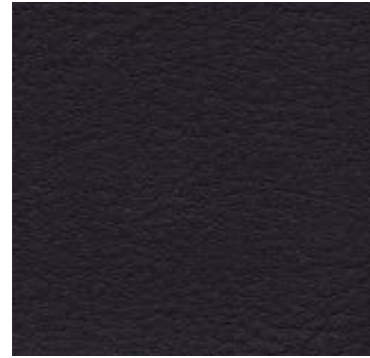
Dicke: 1.3 mm  
 Breite: 137,00 cm  
 Beschichtung: ca. 85% PVC-Compound  
 Träger: ca. 15% BW-Gestrick  
 Material: Vinyl

Flammschutz:  
 DIN EN4102-B1  
 Materialeigenschaften:  
 sehr Abriebfest, Blut- und Urinbeständig, Desinfektionsmittelbeständig,  
 Easy-to-clean, Lichtecht  
 Martindale: 75.000 Martindale





Zusammensetzung: 89% PVC-Compound, 11% BW/PES-gestrickt  
Gewicht: 600g/lfdm

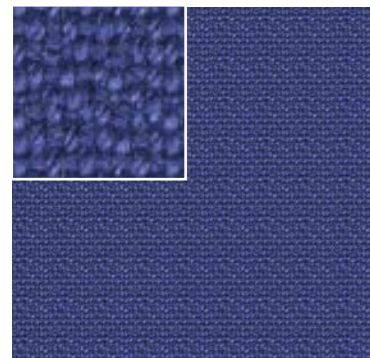


3486 Schwarz

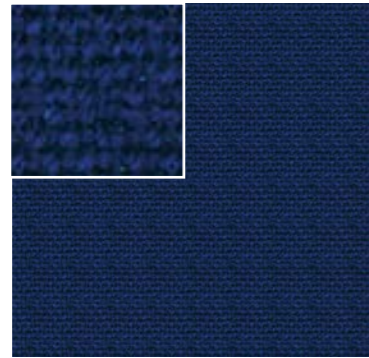
# HI-TECH (ESD - Stoff)

Hi-Tech ist ein besonders leistungsstarker Polsterstoff mit einzigartigen antistatischen Eigenschaften. Er wurde speziell entwickelt, um den Aufbau statischer Aufladung vom Möbelstück zur Erde abzuleiten, so dass es keine üblen Schläge gibt. Hi-Tech ist ein attraktiver schlichter Dobby-Webstoff, der in einigen kommerziellen Farben erhältlich ist.

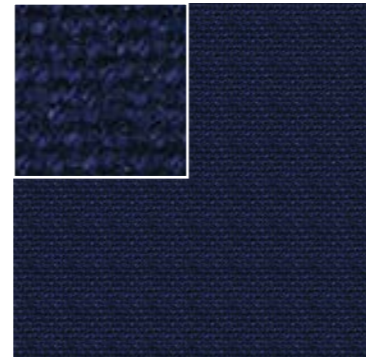
Zusammensetzung: 29% Wolle, 70% Polypropylene, 1% BASF Resistat® Gewicht: 360g/m² ± 5%	Scheuerfestigkeit: 60.000 Martindale	Lichtechtheit: 5 (ISO 105-B02:1999) Reibechtheit: Nass: 4 / Trocken: 4 (ISO 105- X12:2002)	Hersteller: Camira
--	---	--	--------------------



AS085 Corinth



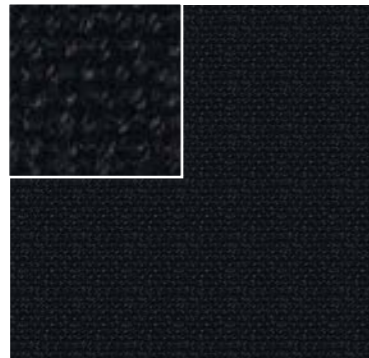
AS004 Cobalt



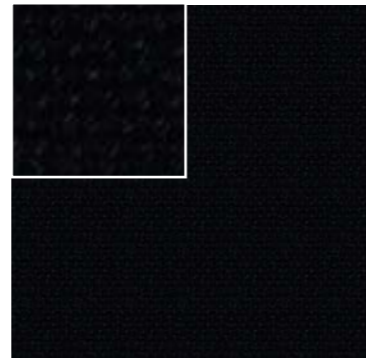
AS061 Twilight



AS078 Anthracite



AS000 Charcoal



AS064 Black

Hochwertiges PU Kunstleder (FR) mit weichem Griff. Pflegeleicht. Besonders geeignet für den Objekt- und Pflegebereich.

Zusammensetzung:  
42% Polyurethan / 20% Polyester /  
38% Protex®  
Gewicht:  
510 g/m²

Scheuerfestigkeit:  
500.000 Touren  
Atmungsaktiv:  
nach DIN 53122-1  
Reibechtheit:  
trocken: 5 / nass: 5 (EN ISO 105X12)

- Lichtechtheit ± 5~6
- Wasser- & Schmutzabweisend
- Wasserdicht
- Wassersäule ± > 10.000
- Antibakteriell / Antischimmel
- Flammhemmend B2



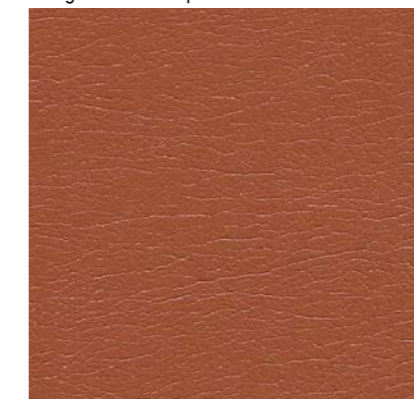
Ruby - 12-0008 Alpine



Ruby - 10-0015 Cement



Ruby - 10-5006 Ocean



Ruby - 10-8017 Sienna



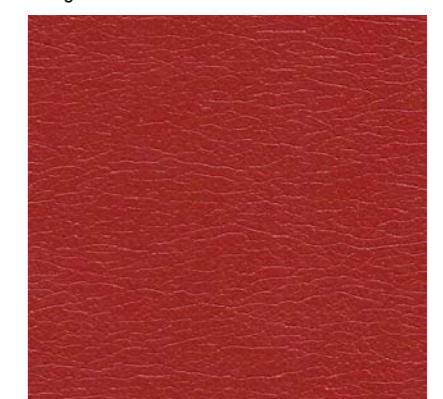
Ruby - 10-7017 Slate



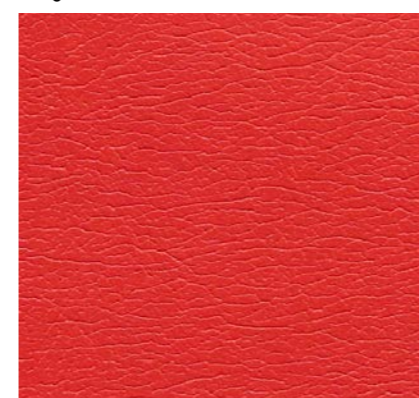
Ruby - 10-1002 Corn



Ruby - 10-5014 Persian



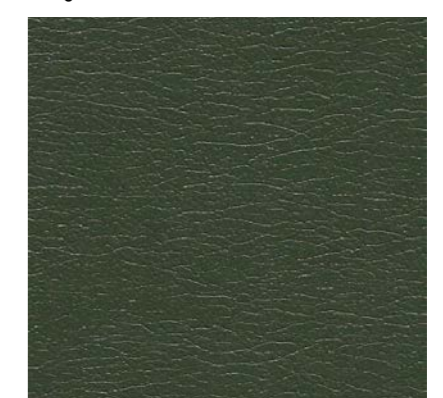
Ruby - 10-3005 Bordeaux



Ruby - 10-3001 Red



Ruby - 10-6021 Spring



Ruby - 10-6007 Bottle

Zusammensetzung:  
gedecktes Rindsleder, geprägt auf europäischen Häuten

Finish: auf Wasserbasis veredelt  
Dauerbiegefestigkeit: 50.000 (ISO 5402)  
Breite: 140cm

Lichtechtheit: 5 (ISO 105B02)  
Reibechtheit: Nass: 4 / Trocken: 4  
Weiterreißfähigkeit: Einkantenriss 20 NM (ISO 3377-1)



ACQUA 4422



ROT 4417



427 BLUE



NERO 4423

Rohware: Mitteleuropäische Bullenhäute

- Nappaleder - leicht pigmentiert
- Stärke: 1,2 - 1,4 mm
- Gerbung: strak pflanzlich nachgegerbtes Chromleder
- Entspricht den Vorschriften für Schadstofffreiheit.
- Leichte Glanz-, Farb- und Strukturunterschiede sind normal und gelten als Echtheitszertifikat
- Patina und entstehende Glanzstellen sind warentypisch.



Marine



Bourgogne



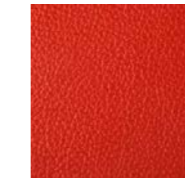
Cherry



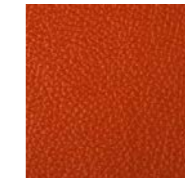
Ferrari



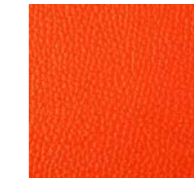
Kardinal Red



Ziegelstein



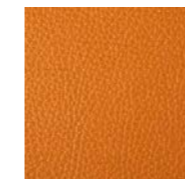
Brique



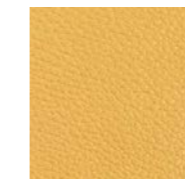
Orange



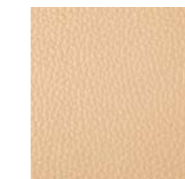
Camel



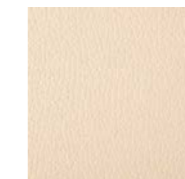
Sabbia



Desert



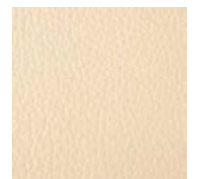
Kalahari



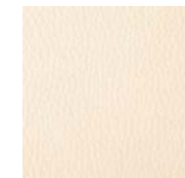
Betulla



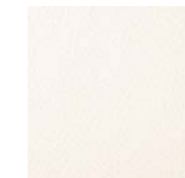
Avorio



Polar



Creme



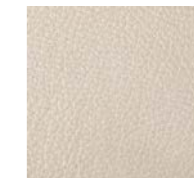
Bianco



Skyblue



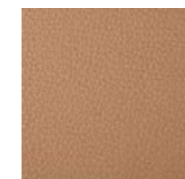
Nebbia



Pearl



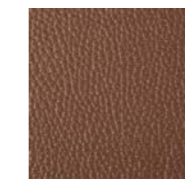
Mastic



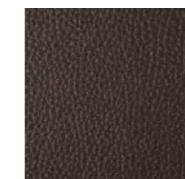
Mokka



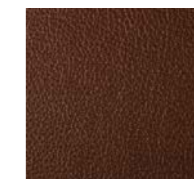
Smog



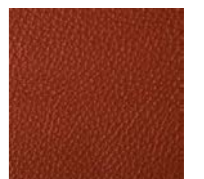
Lever



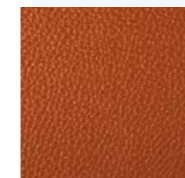
Graphit



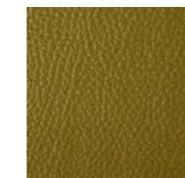
Espresso



Terra



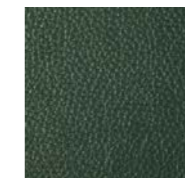
Natur



Apple Green



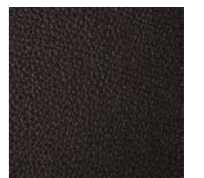
Lime



Forest



Verde



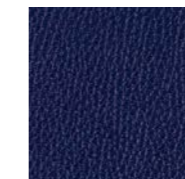
Pacific



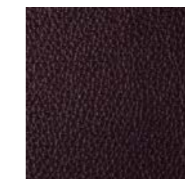
Café



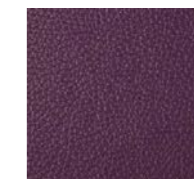
Café



Kobalt



Merlin



Aubergine



Lila

Rohware: Mitteleuropäische Bullenhäute

- Nappaleder, vollnarbig, leicht pigmentiert
- Stärke: 1,6 - 1,8 mm
- Gerbung: stark pflanzlich nachgegerbtes Chromleder
- Natürliche Narbenprägung
- Entspricht den Vorschriften für Schadstofffreiheit
- Leichte Glanz-, Farb- und Strukturunterschiede sind normal und gelten als Echtheitszertifikat.
- Patina und entstehende Glanzstellen sind im Gebrauch warentypisch.



Rohware: Süddeutsche Bullenhäute

- Chromleder pigmentiert, mit markanter Prägung
- Stärke: 1,8 - 2,0 mm
- Cornado ist ein voluminöses und robustes Bezugsleder.
- Es bietet eine ausgesprochen hohe Belastbarkeit mit einer behaglichen Ausstahlung für dauerhaften Sitzkomfort.



Rohware: Skandinavische Bullenhäute

- Anilinleder - naturbelassen
- Reibechtheit: trocken 3-4, nass 3
- Lichtechtheit 3
- Stärke: 1,5 -1,7 mm
- Hautstruktur ist zu 100% natürlich.
- Cornett hat einen sehr weichen, warmen, samtigen Griff.
- Naturmerkmale wie Dornenrisse, Insektenstiche und Vernarbungen bleiben erhalten.
- Dieses Leder strahlt bei Berührung Wärme aus - für Sitzkomfort der Spitzenklasse!



Rohware: Mitteleuropäische schwere Bullenhäute

- Wachsleder - naturbelassen
- Gerbung: strak pflanzlich nachgegerbtes Chromleder
- Stärke: 1,3 - 1,4 mm
- Natur- und Wachstumsmerkmale sind sichtbar.
- Entspricht den Vorschriften für Schadstofffreiheit.
- Leichte Glanz-, Farb- und Strukturunterschiede sind normal und gelten als Echtheitszertifikat.
- Patina und entstehende Glanzstellen sind warentypisch.
- Entstandene Kratzer sind charakteristisch und können mit Pflegewachs wegpoliert werden.

